



4 bedroom terraced house for sale £675,000
London



Robert Vincent

London

£675,000 Freehold

4 bedroom terraced house for sale

Description

We are pleased to offer this truly amazing four-bedroom Victorian terraced house, offered to the market with a quirky feel and an abundance of beautiful features and characteristics. Ideal for a growing family, with just moments away from Kent House Station and Penge East Station, Beckenham, and Penge High Street. Situated in the heart of Penge, this is a property not to be missed. On the ground floor you enter an attractive hallway, the main reception room incorporates the living/dining room which is an open plan area with beautiful floor flowing into the kitchen. The kitchen was only installed five years ago and includes integrated fridge freezer, a dishwasher and a five burner Rangemaster cooker. The kitchen flows nicely with French doors opening directly into a Mediterranean courtyard garden with festive lighting and flower bed designs, not overlooked this offers a nice peaceful, calm setting. To the first floor we have a split-level landing to bedroom two, which has the added benefit of an ensuite shower room. Further steps lead up to two further bedrooms and a beautiful Victorian style bathroom suite with free standing roll top bath and a wall hung chrome shower unit, brick effect wall tiles and a lovely jazzy floor, which gives the bathroom that cosy Victorian feel. Lastly, we have another staircase leading to the Master bedroom with handmade fitted wardrobe, with 'His and Hers' draws and hanging space, behind the wardrobe you have eves storage space. With this property your convenience is just a stone throw away, with the High Street offering local amenities, Penge General, Alexandra Nurseries, Crystal Palace Park are all nearby too. Penge East and Kent House Overground Station offer a 20-minute commute into London Victoria or London. This family home is truly amazing and has good accommodation over three floors. Ideal for a growing family with all the benefits of everything on your doorstep. Please call Robert Vincent Estate Agent for internal viewings.

Council Tax Band: D (London Borough of Bromley)

Tenure: Freehold

Viewing by appointment only

Robert Vincent Estate Agents - Head Office

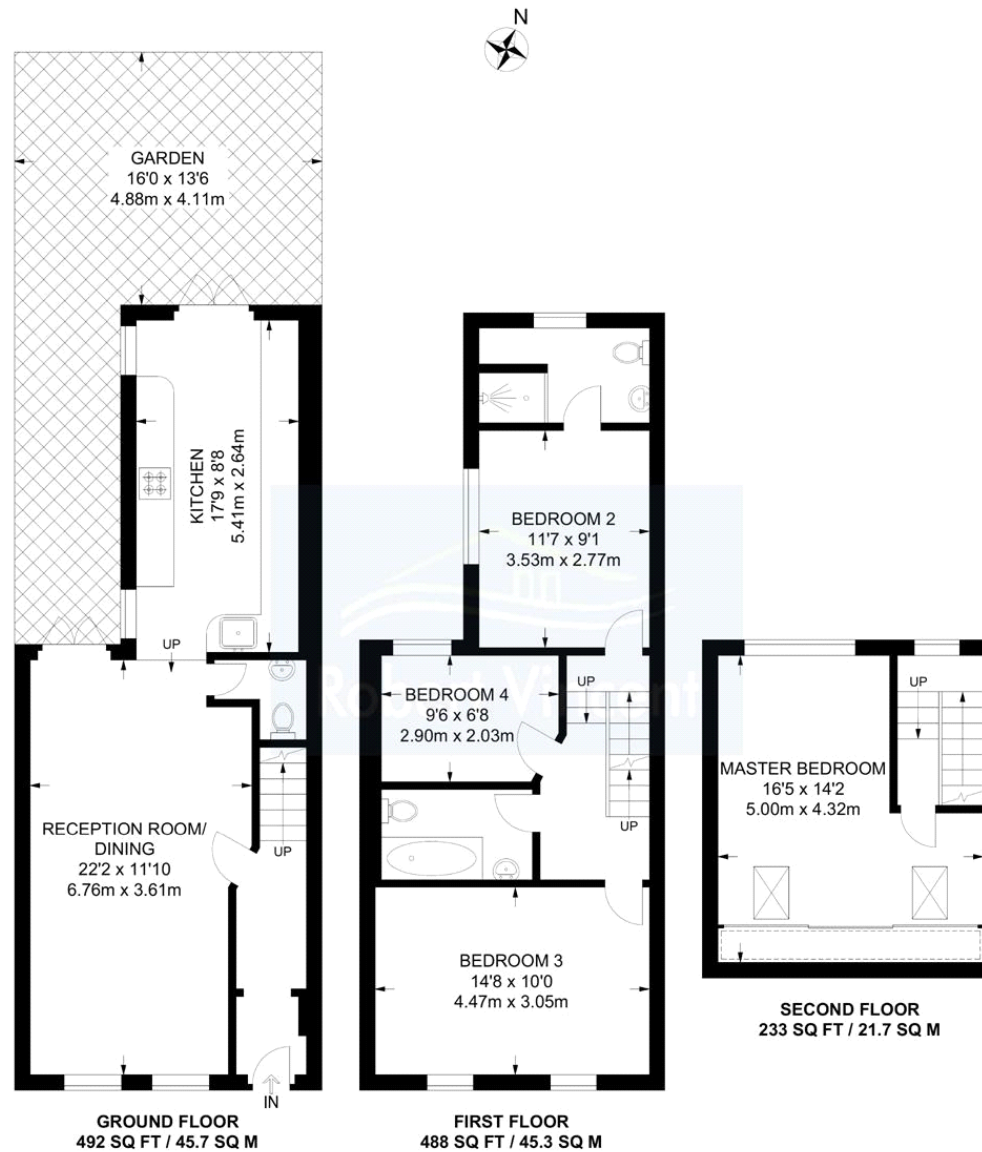
125 High Street, West Wickham, Kent BR4 0LT

Tel: 0208 655 3257 Email: properties@robertvincent.co.uk

Website: <http://www.robertvincent.co.uk/>



Robert Vincent





Energy Efficiency Rating		
	Current	Potential
Very energy efficient - lower running costs		
(92-100) A		
(81-91) B		82
(69-80) C		
(55-68) D	57	
(39-54) E		
(21-38) F		
(1-20) G		
Not energy efficient - higher running costs		
England & Wales	EU Directive 2002/91/EC	

The energy efficiency rating is a measure of the overall efficiency of a home. The higher the rating the more energy efficient the home is and the lower the fuel bills will be.